


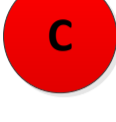



EUROSTUDENT VII

Questionnaire

Version 17.12.2018

	Yellow = Filter This question just appears for some groups of participants. E.g. only Students with children see the respective question.
	Green = Possible Answers depend on previous choices E.g. only Students who receive transfers in kind from different sources or who receive a grant, see different items in this question.
	Blue = Question text is different for different groups E.g. Students who did an internship abroad see another formulation of the respective question than other participants.
	Red = Compulsory question
	Purpe Star = Focus group

Abbreviations used (1):

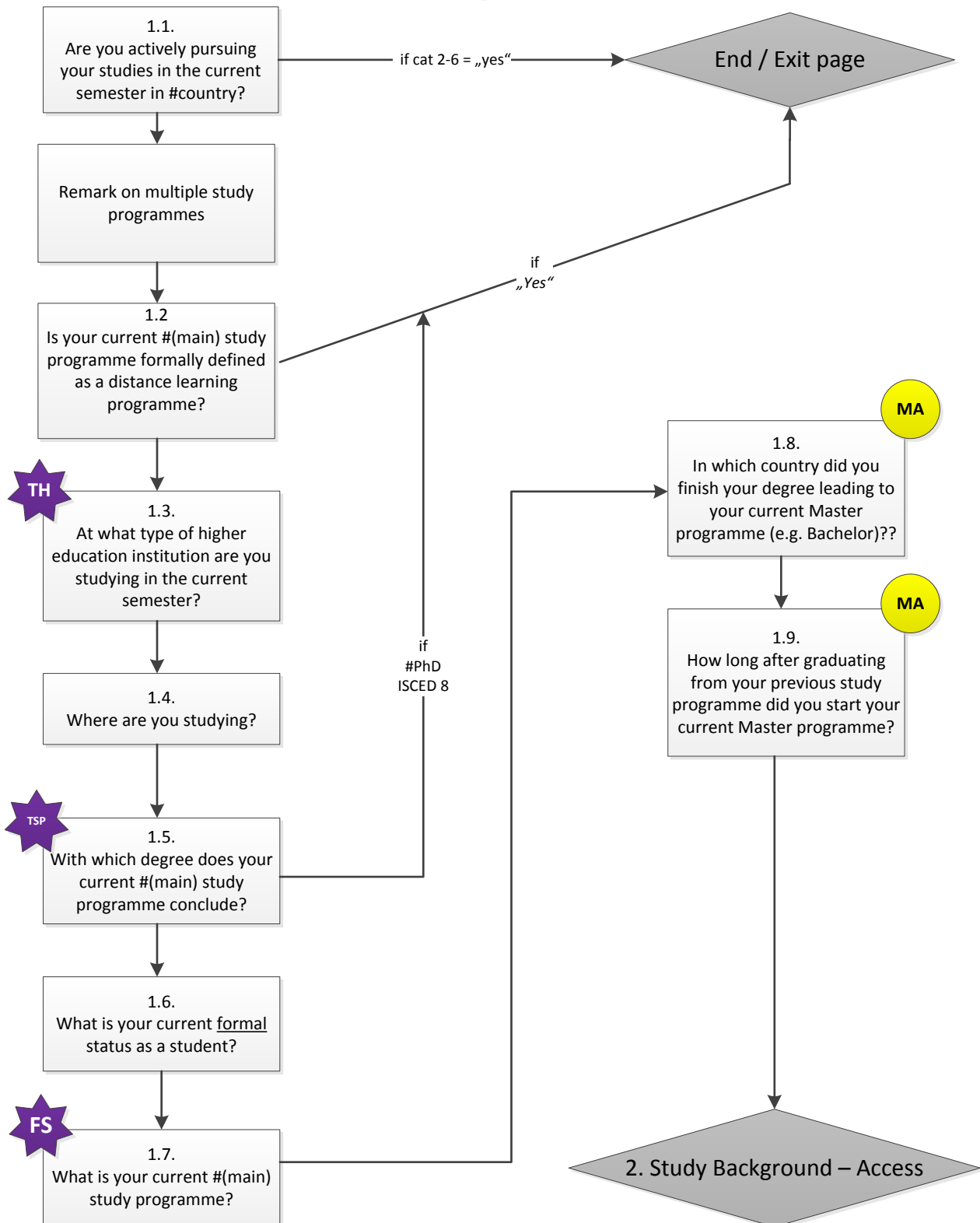
MA	-	Master students
SM	-	Students with #SMAR
nSM	-	Students without #SMAR
SwC	-	Students with children
SwI	-	Students with Impairment(s)
WS	-	Students who work (occasionally) during the #lecture period
IC	-	Students who did an internship in #country
IA	-	Students who did an internship abroad
SPA	-	Students who did a study period abroad
NLwP	-	Students who do not live with their parents
WE	-	Students with work experience prior to HE
FS	-	Financial sources students are financing themselves from

Abbreviations used (2):

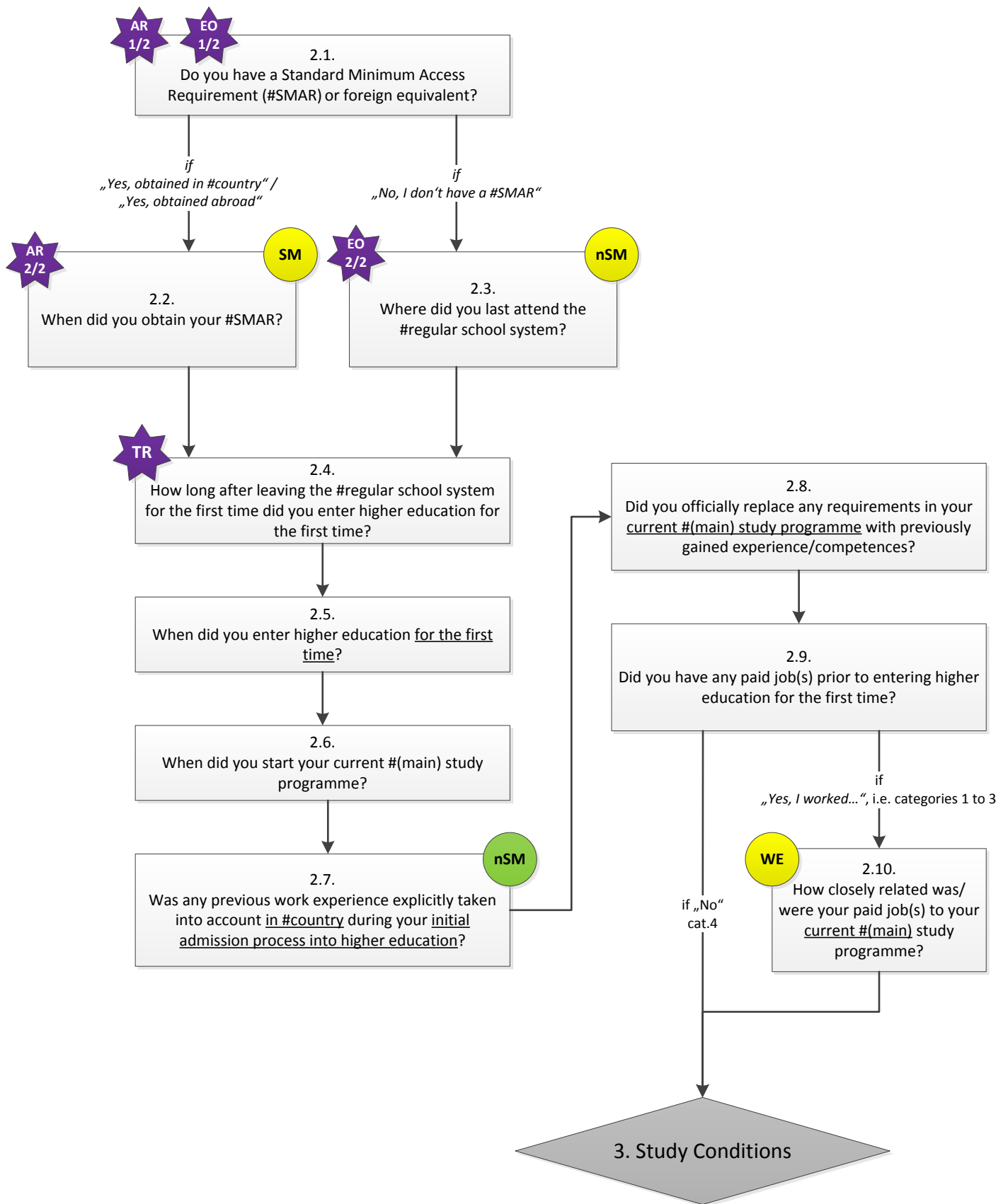
Focus Groups

AG	-	Age group
EB	-	Educational background
IS	-	Impairments
MB	-	Migration background
SX	-	Sex
DIS	-	Dependency on income source
FD	-	Financial difficulties
HS	-	Housing situation
SPE	-	Students in paid employment
FS	-	Field of study
SI	-	Study intensity
TH	-	Type of HEI
TSP	-	Type of study program
AR	-	Access route
EO	-	Educational origin
TR	-	Transition route

1. Current Study Situation



2. Study Background – Access



3. Study Conditions

3.1.
During the current #lecture period, are you experiencing any difficulties in your current # (main) study programme due to any of the following?

3.2.
To what extent do you generally agree with the following statements regarding your #lecturers in your study programme during the current #lecture period?

3.3.
Generally, to what extent do you agree with the following statements with regard to your current # (main) study programme?

3.4.
How many hours do you spend in taught courses and on personal study time in a typical week during the current #lecture period?

3.5.
Looking at the time you spend on study-related activities and paid job(s) during the current #lecture period, please indicate if you would like to spend less or more time on the following activities:

3.6.
Generally, to what extent do you agree with the following thoughts regarding your studies?

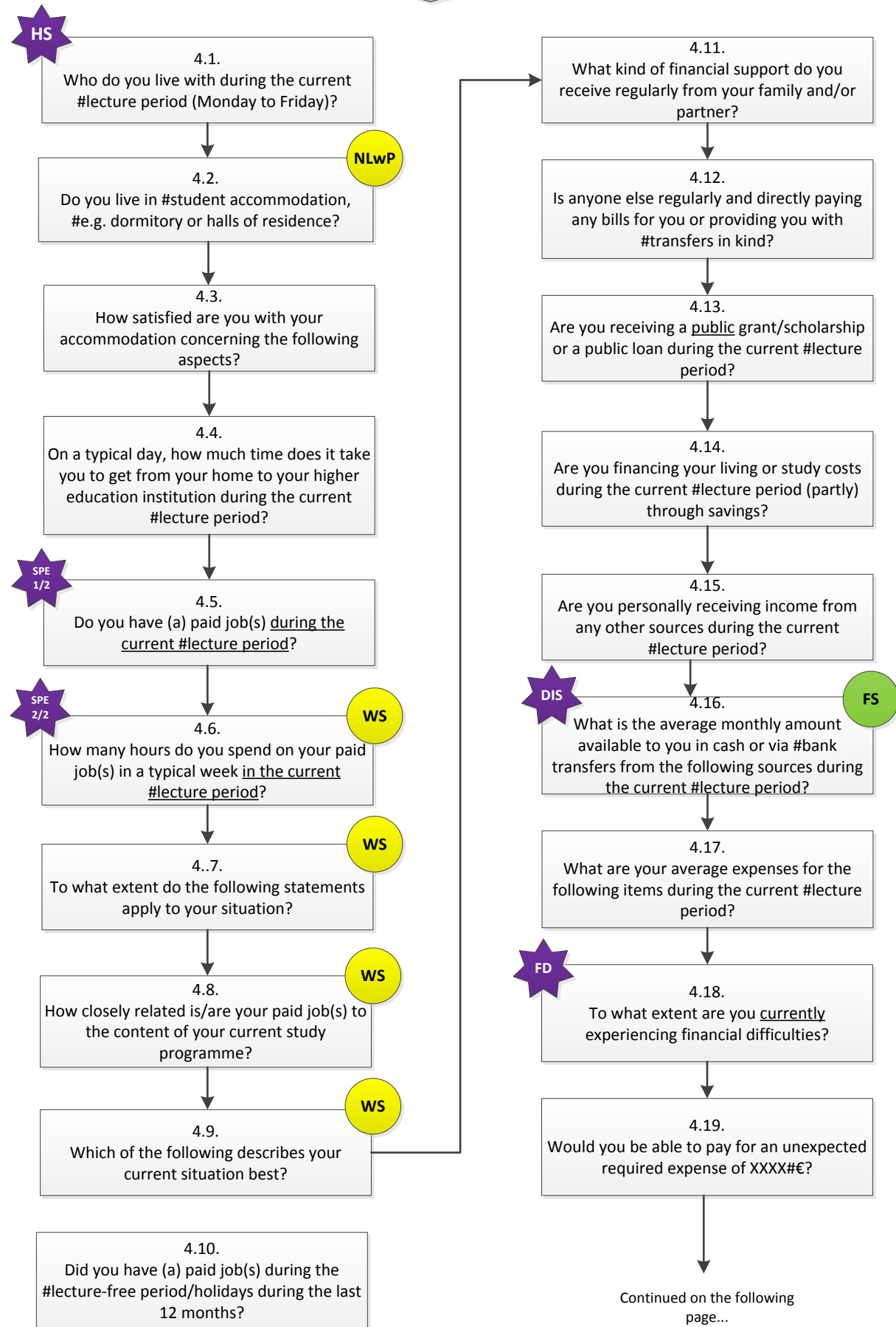
3.7.
How satisfied are you with the support provided to you by your #higher education institution or #cooperating organisations (#example organisation for student affairs) regarding the following aspects?

3.8.
How would you rate your performance so far in your current # (main) study programme in comparison to that of your fellow students?

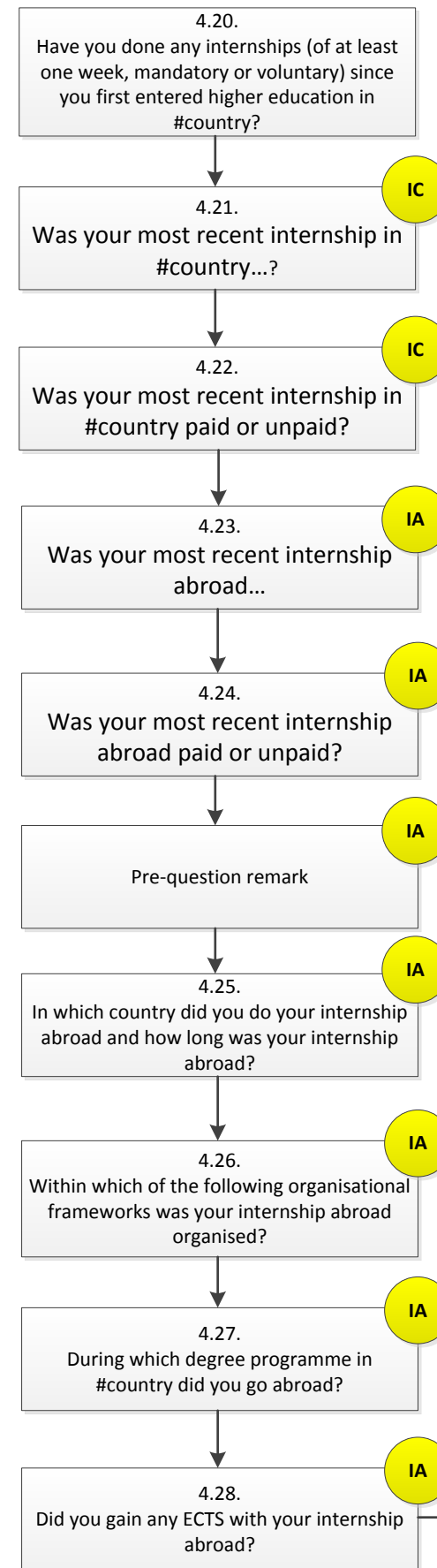
3.9.
To what extent do you feel your current # (main) study programme is preparing you for the labour market?

4. Study Conditions

4. Living Conditions

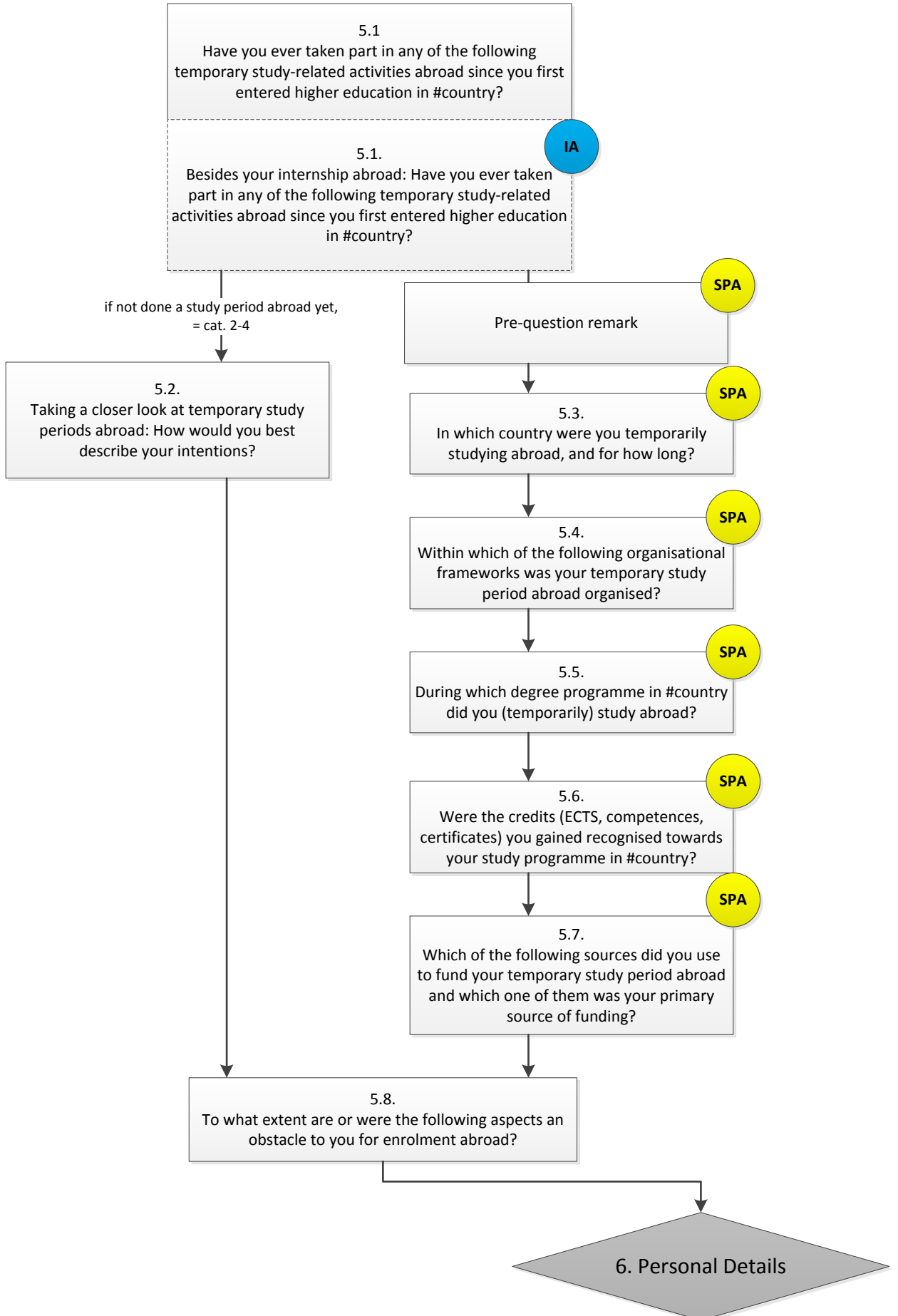


Continuation of 4. Living Conditions

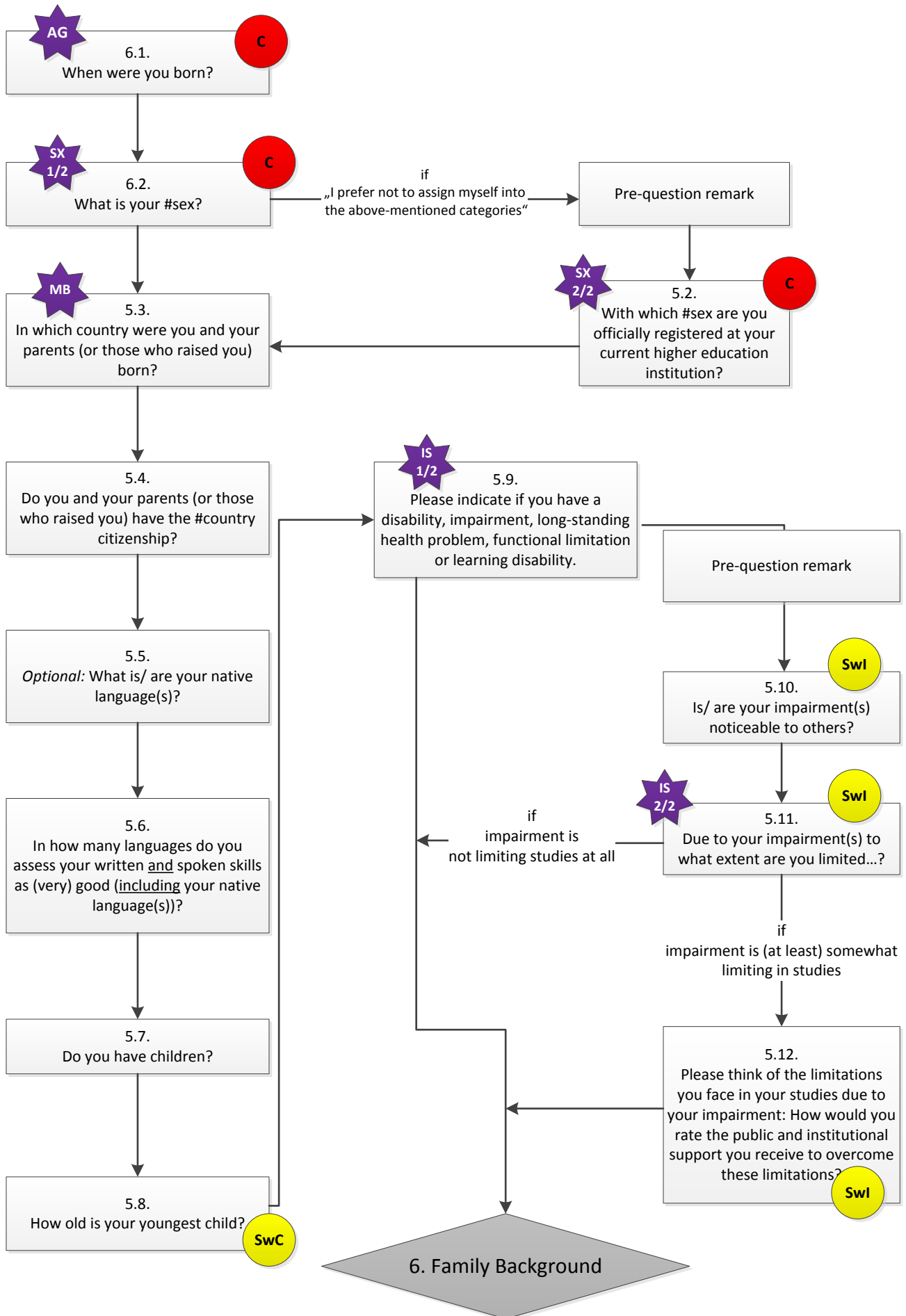


5. International Mobility

5. International Mobility



6. Personal Details



7. Family Background



7.1.
What is the highest level of education your mother/#guardian and father/#guardian have obtained?



7.2.
How well-off financially do you think your parents (or #guardians) are compared with other families?