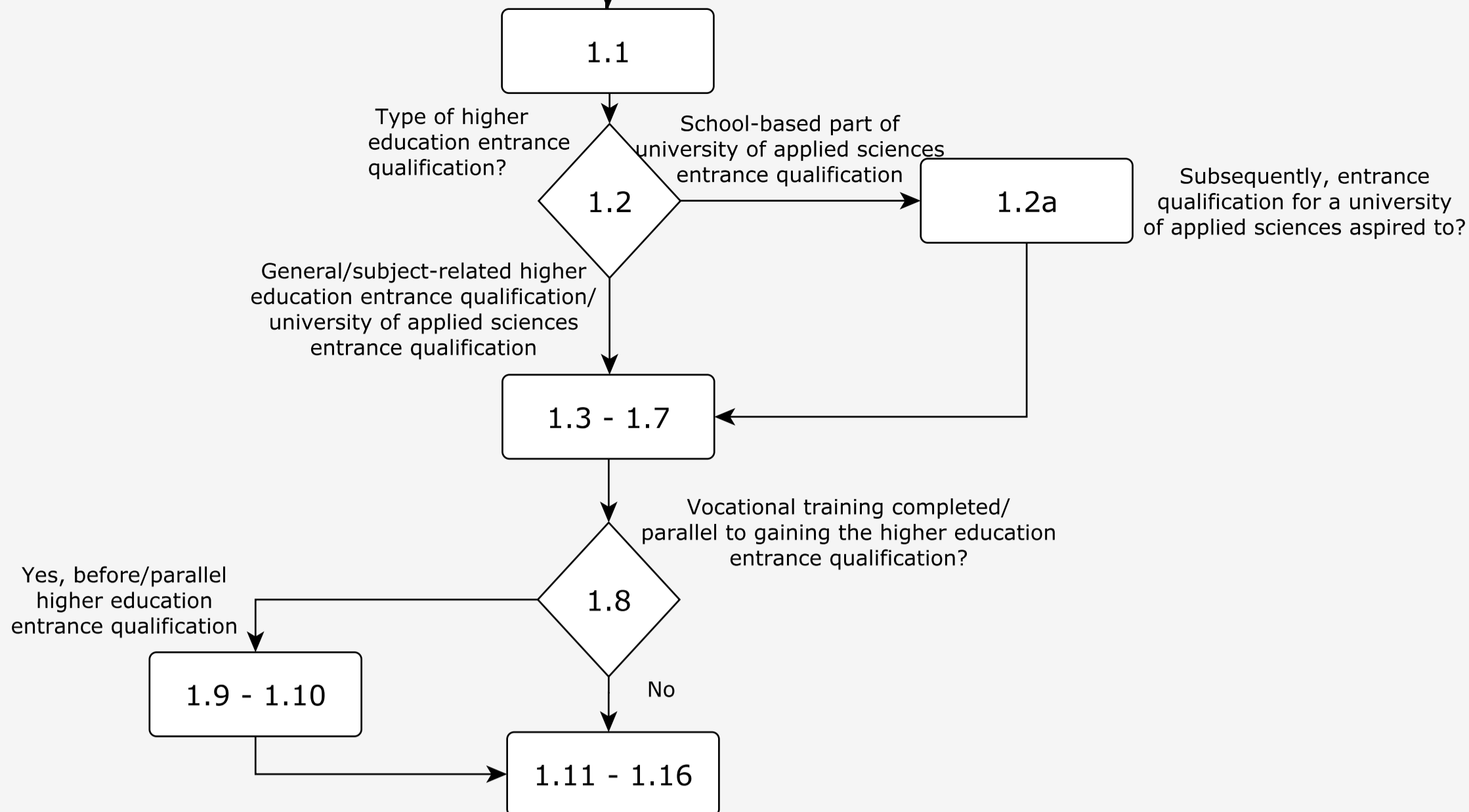
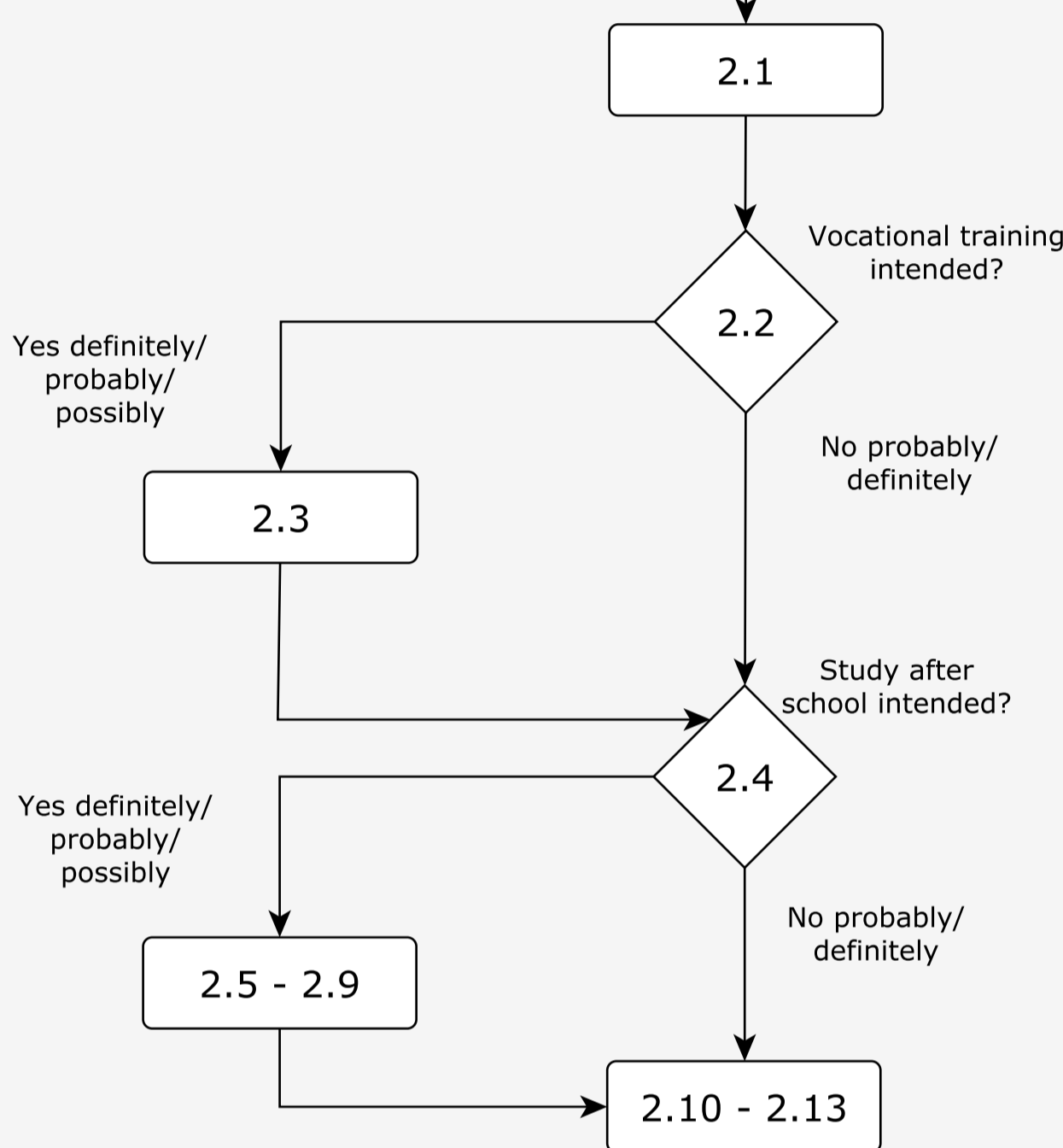


Start

### 1. Questions about school time



### 2. Time after school



### 3. Decision-making

3.1 - 3.13

Additional note: In Hamburg, an additional question 3.14 on starting salary was asked, which was question 4.7 in other federal states.

### 4. Personality and values

4.1 - 4.7

Additional note: In Hamburg there was no question 4.7, cf. additional note to question block 3.

### 5. Personal information

5.1 - 5.3

Born in Germany?

5.4

Yes

No

5.5 - 5.9

5.4 (a)

Since when in Germany?

Additional note: In Hesse and Berlin, the questions on the number of books of the parents, the parents' countries of birth and the parents' vocational training qualifications were not asked. The question numbering differs as a result.

Finish